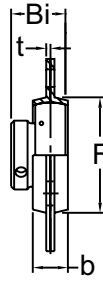
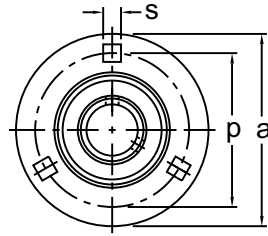
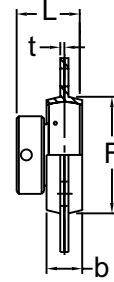




NORMAL DUTY



BPF 200 Type
Set-Screw Locking



KHPF 200 Type
Eccentric Collar Locking

Set-Screw/Eccentric Locking
Narrow Inner Ring
Pressed Steel Housing
Non-Relube
Insert Detail-pg.116,117
Inch and Metric

Shaft Diam. (in.)	AMI Unit # Complete with B Type	List Price	AMI Unit # Complete with KH200 Type	List Price	Dimensions (in.)								Bolt Size (in.)	Bearing #		Housing #	Weight (lb.)
					a	p	t	b	s	F(min)	Bi	L		B	KH		
1/2	BPF1-8	36.75	KHPF201-8	38.15	3-3/16	2-1/2	0.079	9/16	9/32	1-15/16	0.866	1-1/8	1/4	B1-8	KH201-8	PF3	0.50
5/8	BPF2-10		KHPF202-10		3-9/16	2-13/16	0.079	5/8	11/32	2-3/16	0.972	1-7/32	5/16	B2-10	KH202-10		0.48
3/4	BPF4-12	37.25	KHPF204-12	38.65	3-9/16	2-13/16	0.079	5/8	11/32	2-3/16	0.972	1-7/32	5/16	B4-12	KH204-12	PF4	0.64
7/8	BPF5-14	38.00	KHPF205-14	38.90	3-3/4	3	0.079	11/16	11/32	2-3/8	1.063	1-7/32	5/16	B5-14	KH205-14	PF5	0.86
15/16	BPF5-15		KHPF205-15											B5-15	KH205-15		
1	BPF5-16		KHPF205-16											B5-16	KH205-16		
1-1/16	BPF6-17	49.00	—	52.25	4-7/16	3-9/16	0.102	11/16	13/32	2-13/16	1.193	1-13/32	3/8	B6-17	—	PF6	1.32
1-1/8	BPF6-18		KHPF206-18											B6-18	KH206-18		
1-3/16	BPF6-19		KHPF206-19											B6-19	KH206-19		
1-1/4	BPF6-20		KHPF206-20											B6-20	KH206-20		
1-1/4	BPF7-20	61.45	KHPF207-20	68.85	4-13/16	3-15/16	0.102	3/4	13/32	3-3/16	1.295	1-17/32	3/8	B7-20	KH207-20	PF7	1.80
1-5/16	BPF7-21		KHPF207-21											B7-21	KH207-21		
1-3/8	BPF7-22		KHPF207-22											B7-22	KH207-22		
1-7/16	BPF7-23		KHPF207-23											B7-23	KH207-23		
Dimensions (mm)																	
12	BPF1	36.75	KHPF201	38.15	81	63.5	2	14	7	49	22	28.6	M6	B1	KH201	PF3	0.50
15	BPF2		KHPF202											B2	KH202		0.48
17	BPF3		KHPF203											B3	KH203		0.64
20	BPF4	37.25	KHPF204	38.65	90	71.5	2	16	9	56	24.7	31	M8	B4	KH204	PF4	0.64
25	BPF5	38.00	KHPF205	39.90	95	76	2	18	9	60	27	31	M8	B5	KH205	PF5	0.86
30	BPF6	49.00	KHPF206	52.25	113	90.5	2.6	18	11	71	30.3	35.7	M10	B6	KH206	PF6	1.32
35	BPF7	61.45	KHPF207	68.85	120	100	2.6	19	11	81	32.9	38.9	M10	B7	KH207	PF7	1.80

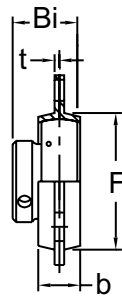
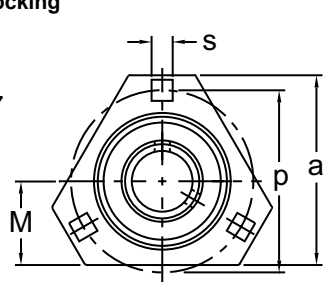
INTERCHANGES: SSF3S F3B-SL FPS3-25 ASPF RAY SSF SSF3E F3B-SLX RA F-FM AELP SSF-E



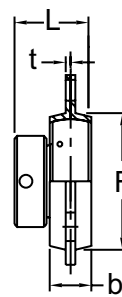
PRESSED STEEL THREE-BOLT FLANGE UNITS

BPFT / KHPFT 200

Set-Screw/Eccentric Locking
 Narrow Inner Ring
 Pressed Steel Housing
 Non-Relube
 Insert Detail-pg.116,117
 Inch and Metric



BPFT 200 Type
Set-Screw Locking



KHPFT 200 Type
Eccentric Collar Locking



NORMAL DUTY

Shaft Diam. (in.)	AMI Unit # Complete with B Type	List Price	AMI Unit # Complete with KH200 Type	List Price	Dimensions (in.)									Bolt Size (in.)	Bearing #		Housing #	Weight (lb.)
					a	p	t	b	s	F(min)	M	Bi	L		B	KH		
1/2	BPFT1-8	36.75	KHPFT201-8	38.15	2-23/32	2-1/2	0.079	9/16	9/32	1-15/16	1-1/8	0.866	1-1/8	1/4	B1-8	KH201-8	PFT3	0.49
5/8	BPFT2-10		KHPFT202-10		3	2-13/16	0.079	5/8	11/32	2-3/16	1-5/16	0.972	1-7/32	5/16	B2-10	KH202-10	PFT4	0.54
3/4	BPFT4-12	37.25	KHPFT204-12	38.65	3	2-13/16	0.079	5/8	11/32	2-3/16	1-5/16	0.972	1-7/32	5/16	B4-12	KH204-12	PFT4	0.54
7/8	BPFT5-14		KHPFT205-14		39.90	3-1/8	3	0.079	11/16	11/32	2-3/8	1-3/8	1.063	1-7/32	5/16	B5-14	KH205-14	PFT5
15/16	BPFT5-15	KHPFT205-15	3-1/8	3		0.079	11/16	11/32	2-3/8	1-3/8	1.063	1-7/32	5/16	B5-15	KH205-15			
1	BPFT5-16	38.00	KHPFT205-16	39.90	3-1/8	3	0.079	11/16	11/32	2-3/8	1-3/8	1.063	1-7/32	5/16	B5-16	KH205-16	PFT5	0.84
1-1/16	BPFT6-17		—		3-11/16	3-9/16	0.102	5/8	13/32	2-13/16	1-1/2	1.193	1-13/32	3/8	B6-17	—		
1-1/8	BPFT6-18	49.00	KHPFT206-18	52.25	3-11/16	3-9/16	0.102	5/8	13/32	2-13/16	1-1/2	1.193	1-13/32	3/8	B6-18	KH206-18	PFT6	1.18
1-3/16	BPFT6-19		KHPFT206-19		3-11/16	3-9/16	0.102	5/8	13/32	2-13/16	1-1/2	1.193	1-13/32	3/8	B6-19	KH206-19		
1-1/4	BPFT6-20		KHPFT206-20		3-11/16	3-9/16	0.102	5/8	13/32	2-13/16	1-1/2	1.193	1-13/32	3/8	B6-20	KH206-20		
1-1/4	BPFT7-20	61.45	KHPFT207-20	68.85	4-5/32	3-15/16	0.102	3/4	13/32	3-3/16	1-3/4	1.295	1-17/32	3/8	B7-20	KH207-20	PFT7	1.69
1-5/16	BPFT7-21		KHPFT207-21		4-5/32	3-15/16	0.102	3/4	13/32	3-3/16	1-3/4	1.295	1-17/32	3/8	B7-21	KH207-21		
1-3/8	BPFT7-22		KHPFT207-22		4-5/32	3-15/16	0.102	3/4	13/32	3-3/16	1-3/4	1.295	1-17/32	3/8	B7-22	KH207-22		
1-7/16	BPFT7-23		KHPFT207-23		4-5/32	3-15/16	0.102	3/4	13/32	3-3/16	1-3/4	1.295	1-17/32	3/8	B7-23	KH207-23		
Dimensions (mm)																		
12	BPFT1	36.75	KHPFT201	38.15	69.1	63.5	2	14.0	7	49	29	22	28.6	M6	B1	KH201	PFT3	0.49
15	BPFT2		KHPFT202		69.1	63.5	2	14.0	7	49	29	22	28.6	M6	B2	KH202		
17	BPFT3		KHPFT203		69.1	63.5	2	14.0	7	49	29	22	28.6	M6	B3	KH203		
20	BPFT4	37.25	KHPFT204	38.65	76.2	71.5	2	16.0	9	56	33	24.7	31	M8	B4	KH204	PFT4	0.54
25	BPFT5	38.00	KHPFT205	39.90	79.4	76	2	18.0	9	60	35	27	31	M8	B5	KH205	PFT5	0.84
30	BPFT6	49.00	KHPFT206	52.25	93.7	90.5	2.6	16.0	11	71	38	30.3	35.7	M10	B6	KH206	PFT6	1.18
35	BPFT7	61.45	KHPFT207	68.85	105.6	100	2.6	19.1	11	81	45	32.9	38.9	M10	B7	KH207	PFT7	1.69

INTERCHANGES: SSF3TS TFPS-25 TSSF SSF3TE RATR 52MSTR TSSF-E